



Installation Instructions

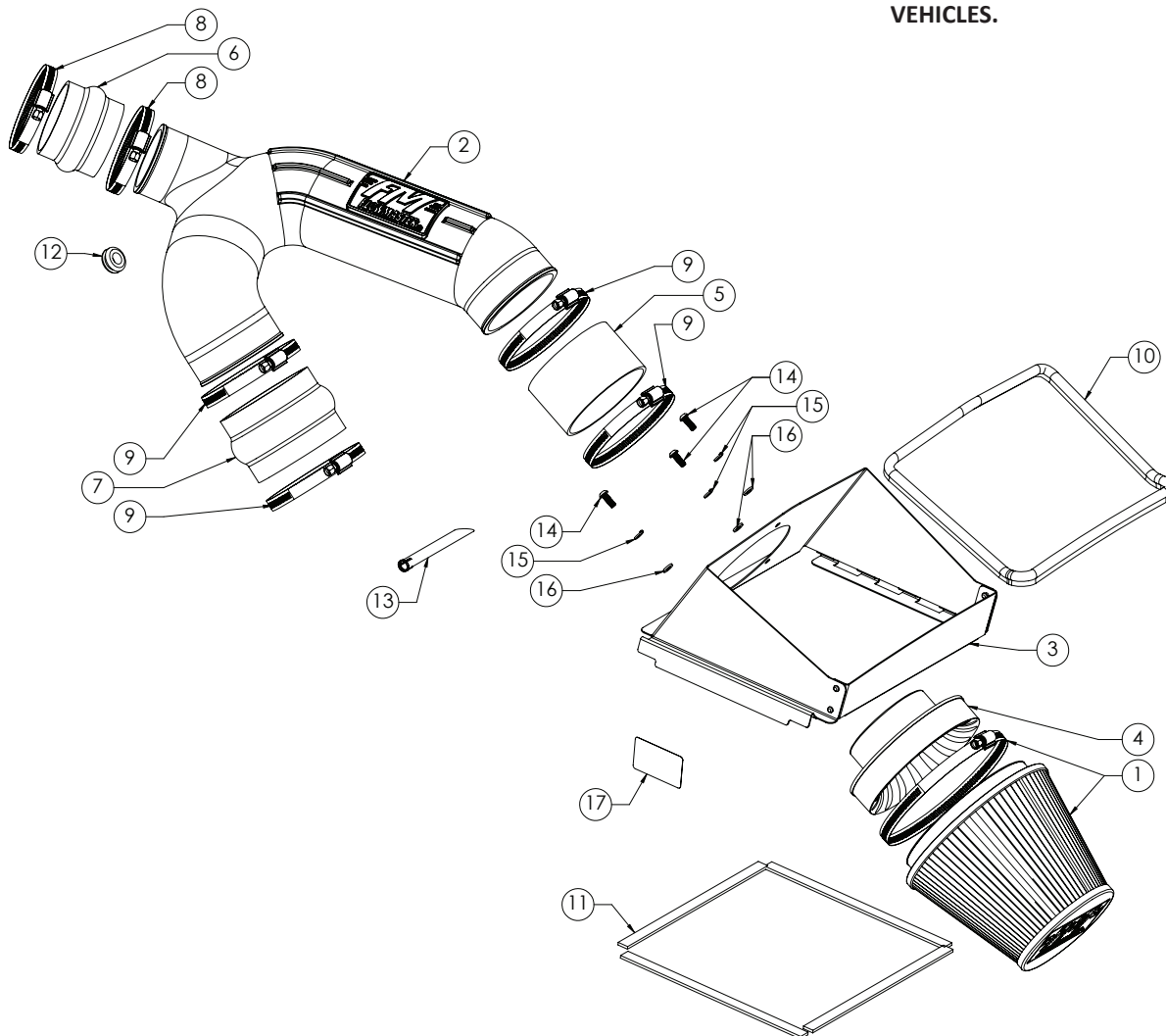
615157

2017-18 FORD F-150

3.5L ECOBOOST ENGINE

This kit is not designed to fit vehicles with a body lift.

THIS INTAKE SYSTEM IS 50-STATE LEGAL FOR THE VEHICLES LISTED ABOVE PER CARB EXECUTIVE ORDER D-698-7. SEE WWW.FLOWMASTERMUFFLERS.COM FOR CARB STATUS OF INTAKE SYSTEMS FOR OTHER VEHICLES.



| ITM # | PART # | DESCRIPTION | QTY. |
|-------|--------|--|------|
| 1 | AF1003 | 6.0 x 6.63 Air Filter Cone | 1 |
| 2 | AF2036 | Molded Intake Tube | 1 |
| 3 | AF3031 | Airbox | 1 |
| 4 | AF6002 | Air Filter Adapter | 1 |
| 5 | AF4050 | 4" x 2½" Straight Rubber Coupler | 1 |
| 6 | AF4036 | 3" x 2½" Hump Rubber Coupler | 1 |
| 7 | AF4005 | 4" x 3" Hump Rubber Coupler | 1 |
| 8 | MC314H | #52 Hose Clamp 2 ¹³ / ₁₆ " - 3 ³ / ₄ " | 2 |
| 9 | MC400H | #64 Hose Clamp 3 ³ / ₁₆ " - 4 ¹ / ₂ " | 4 |

| ITM # | PART # | DESCRIPTION | QTY. |
|-------|----------|----------------------------------|------|
| 10 | 49000061 | Airbox Trim Seal - 48" | 1 |
| 11 | 49000067 | ½" x ½" Adhesive Trim Seal - 48" | 1 |
| N/A | PK881 | Hardware Package includes: | 1 |
| 12 | AF4008 | Rubber Grommet | 1 |
| 13 | AF8006 | Vent Tube | 1 |
| 14 | HW244 | M6 x 1.0 x 16MM Bolt | 3 |
| 15 | HW318 | M6 Split Lock Washer | 3 |
| 16 | HW319 | M6 Flat Washer | 3 |
| 17 | LB698-7 | D-698-7 Carb EO Label | 1 |

OVERVIEW:



1. Please take a moment to read and understand these instructions before installing your Flowmaster performance system.

NOTES:

- Please inventory all parts before starting the install process and call our tech line to report any missing parts. This will help avoid potentially stranding your vehicle until any missing replacement parts arrive.
- We highly recommend that you retain all factory air intake system parts.
- Please refer to vehicle manufacturer's recommendations regarding removal of factory components.
- Disconnecting the negative battery cable erases pre-programmed electronic memories. Write down all memory settings before disconnecting the negative battery cable. Some radios will require an anti-theft code to be entered after the battery is reconnected. The anti-theft code is typically supplied with your owner's manual. In the event your vehicle's anti-theft code cannot be recovered, contact an authorized dealership to obtain your vehicle's anti-theft code.

REMOVE FACTORY AIR INTAKE SYSTEM:

2. Turn off the vehicle's ignition and disconnect the negative battery cable.



3. Loosen (x3) screw clamps on air intake duct.



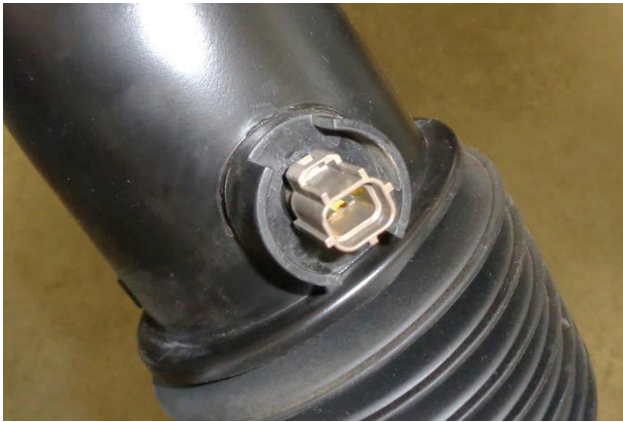
4. Disconnect inlet air temperature sensor plug on back of intake duct.



5. Release (x2) airbox cover latches.



6. Separate intake duct from turbocharger inlets, remove assembled intake duct and airbox cover from vehicle then remove stock air filter.

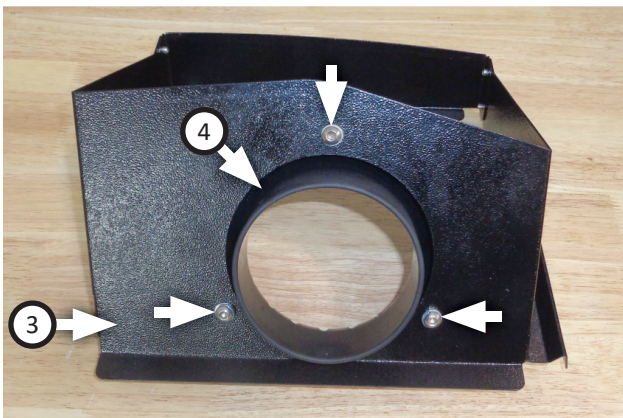


7. To remove inlet air temperature sensor from intake duct, lift its locking tab, rotate sensor a quarter-turn counter-clockwise, then pull. Remove o-ring from sensor.

CAUTION:

The sensor is delicate; handle with care, and store in a safe location until reinstallation.

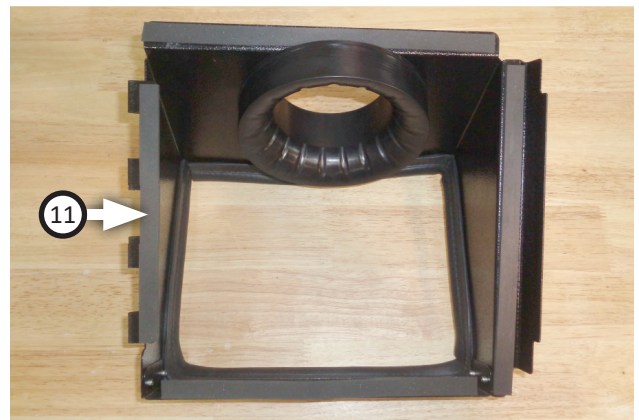
ASSEMBLE & INSTALL COLD AIR INTAKE:



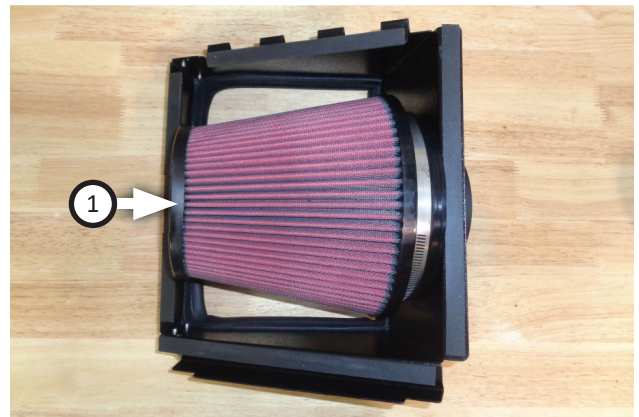
8. Assemble **air filter adapter (4)** to **airbox (3)** using **bolts (14)**, **lock washers (15)** and **flat washers (16)**.



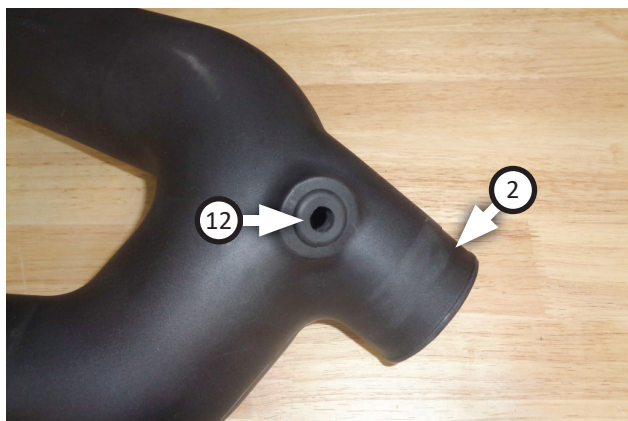
9. Firmly press **gasket (10)** onto airbox, gradually working your way around and trimming it to length.



10. Cut **adhesive gasket (11)** to lengths required, and apply it to four edges of airbox.



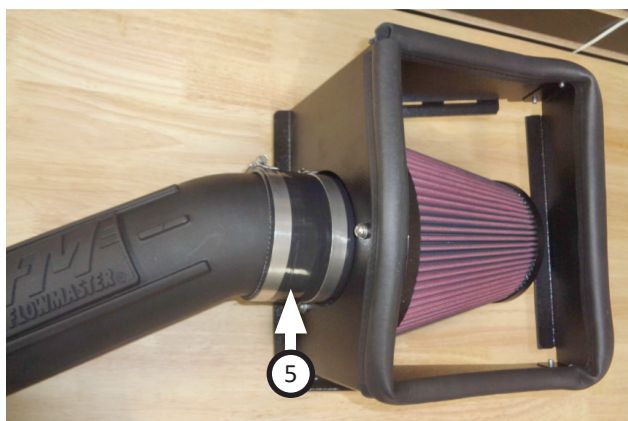
11. Slip hose clamp onto **air filter (1)**, then install it onto filter adapter and tighten clamp.



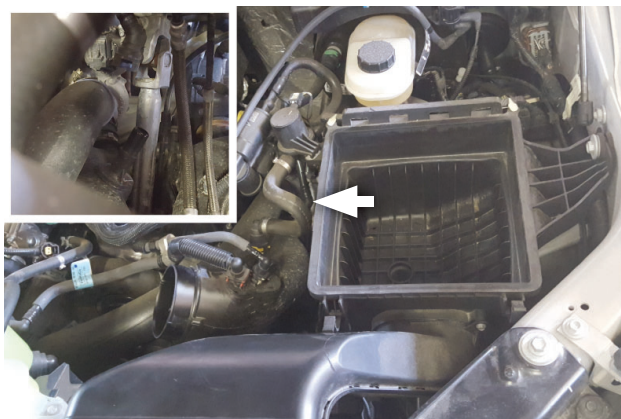
12. Install **grommet (12)** into **intake tube (2)** as shown.



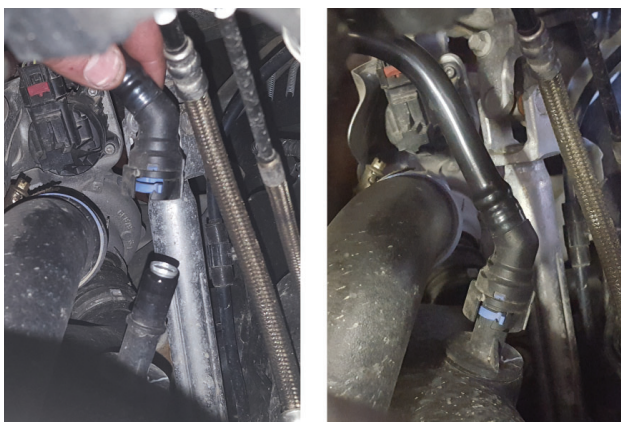
13. Slip (x2) **clamps (8)** onto **hump coupler (6)**. Slip (x2) **clamps (9)** onto **hump coupler (7)**. Push each coupler onto intake tube and partially tighten clamps.



14. Slip (x2) **clamps (9)** onto **straight coupler (5)** then install it onto adapter, pushing it flush against airbox, and tighten clamp. Insert intake tube into coupler and partially tighten clamp.



15. Disconnect PCV tube from turbo inlet as shown.



16. Install **vent tube (13)** into quick connect barb orienting open end of diagonal cut towards turbo. Press it into place then reconnect PCV tube.



17. Insert (x4) airbox tabs on airbox into bracket, then lower assembly and connect (x2) couplers into turbo ducts. Do not tighten clamps.



18. Secure airbox to bracket with (x2) latches.



19. Push each coupler up against stops on turbo duct then tighten clamp. Center intake tube between all couplers, so there are approximately equal amounts of tube inserted in each coupler. Then tighten (x3) clamps on intake tube.



20. Carefully push inlet air temperature sensor into grommet and point locking tab toward air filter. Reinstall sensor plug and verify that connection is secure.

FLOWMASTER CARB EO #
THE PERFORMANCE TECHNOLOGY COMPANY™

DELTA FORCE PERFORMANCE INTAKE

D-698-7

FLOWMASTER INC. • 866-464-6553
1801 RUSSELLVILLE ROAD, BOWLING GREEN, KY 42101

21. Affix **CARB Exemption Order label (17)** to a clean, readily-visible location under the hood (e.g., near hood latch), so an inspector can easily see it at emissions testing.



Congratulations, the installation of your FLOWMASTER cold air intake kit is now complete!

FLOWMASTER INC.
THE PERFORMANCE TECHNOLOGY COMPANY