

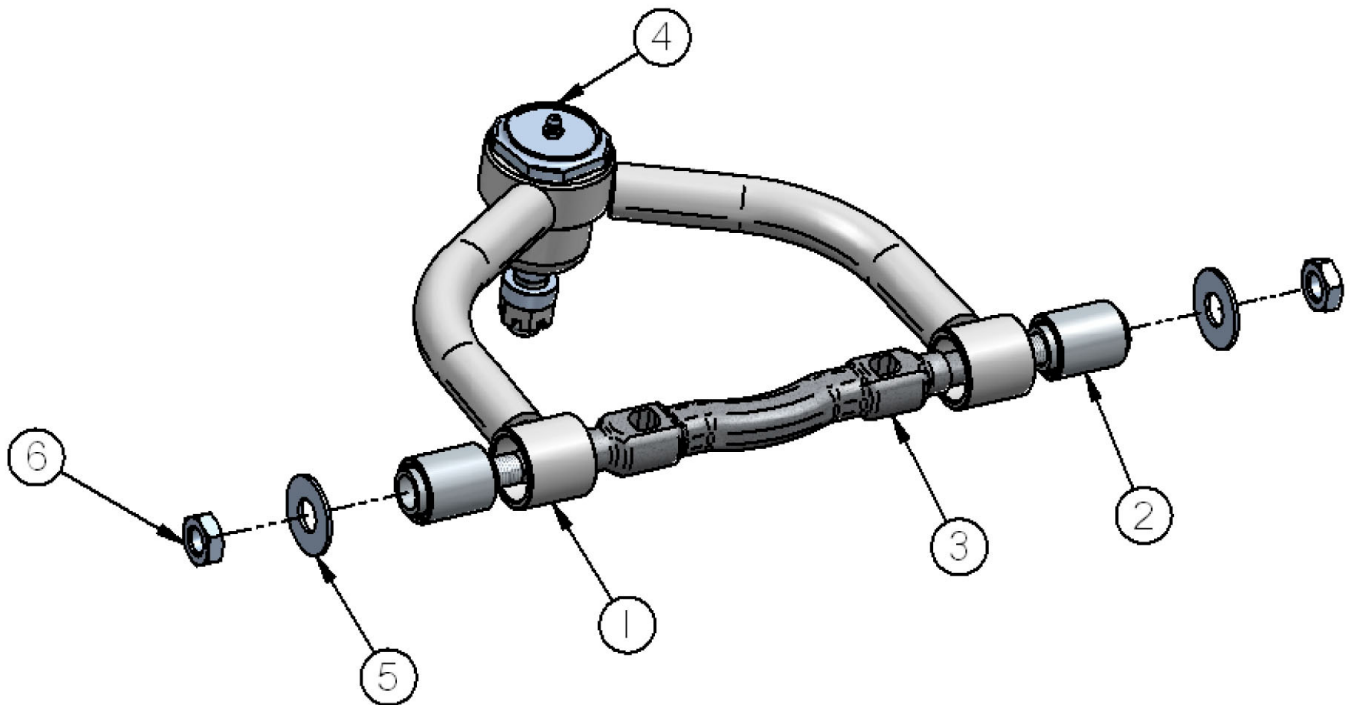
## Part # 19013699 Mustang II Upper StrongArms

### Components:

- |   |          |   |
|---|----------|---|
| 2 | 90000797 | Upper arm (1)   |
| 4 | 90001219 | Rubber bushing for cross shaft (2)                                      |
| 2 | 90001218 | Cross shaft (3)   |
| 2 | 90000895 | Ball joint – includes castle nut, cotter pin, grease fitting & boot (4) |

### Hardware:

- |   |          |                            |
|---|----------|----------------------------|
| 4 | 99563001 | 9/16" USS flat washer (5)  |
| 4 | 99562003 | 9/16"-18 Nylok jam nut (6) |



## Installation Instructions



1. Fasten the upper arm to the frame using the factory hardware. Reinstall the current alignment shims, but **vehicle must be realigned.**

**Note:** The driver and passenger side arms are identical.

2. Fasten the ball joint to the spindle w/ the new boot, castle nut and cotter pin supplied.
3. Position the suspension at mid travel, then tighten the cross shaft nuts.
4. Screw grease fitting into ball joint and lubricate.