

Thank you for purchasing what we believe to be the finest reproduction wing made. The contours of the wing, stanchions and brackets are the most accurate and correct available. The hardware included with this wing is supplied by AMK Products and is as correct as original records allow.

Read all instructions carefully and understand them before doing any work on the trunk lid or wing.

1) Wing assembly

A) Each stanchion is attached to the spoiler using a flat retainer plate, a pivot plate, six sheet metal screws, and an Allen head bolt and washer.

B) The stanchions fit either side. Lay the spoiler upside down on a non-abrasive surface. With the stanchion placed in the wing slot, lay in the flat retainer plate to the outside of the stanchion and tighten down with 3 sheet metal screws.

C) The pivot plate attaches to the inside of the stanchion with 3 more sheet metal screws.

D) Tighten the Allen head bolt with a washer through the retainer plate and into the stanchions threaded hole.

E) Screw the studs into the bottom of the stanchion.

F) Duplicate this process on the other side.

2) Wing Placement

A) Measure over 6 1/4" inches in from the side of the deck lid. Run a strip of masking tape vertically over the 6 1/4" measurement.

B) Measure down 10 1/2" inches from the front of the deck lid. The point where this intersects the 6 1/4" side measurement is the front mounting hole. Use the template provided to mark the rear position on the masking tape.

C) Follow the same process for the other side.

D) Carefully place the assembled wing over your marked masking tape to be sure the holes are aligned properly. Measure twice and check again. Once you are sure everything is in alignment, center punch the 4 holes. Use a 5/16" drill bit (Ford originally used a 19/64" bit but not everyone has that size handy). Protect the surrounding area if the deck lid is painted. If the drill walks, the extra tape may provide extra protection from scraping up the paint. A good center punch will prevent this though. Remember to double check your alignment before you drill!!! (Original Ford deck lids drilled from the factory have been known to be off as much as 1/8")



Outside mounting plate



Inside mounting plate



Measure from the side inward 6 1/4"

E) Dress holes with primer, touch-up paint or POR-15 to prevent rust. Scuff and paint wing and stanchions as desired.

3) Wing Mounting

A) Place sealing washers on wing studs.

B) Place stanchion gaskets over studs.

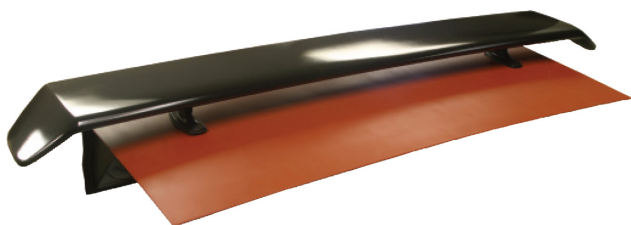
C) Carefully lower wing into holes in trunk lid. Be careful to not scratch the paint!

D) Install the nuts with spin washers to the studs and tighten. Make sure wing is square and gasket lips surround the stanchions.

E) Cover exposed stud ends with rubber caps.

F) Adjust wing angle by loosening both Allen head bolts, adjust angle to desired position and re-tighten bolts.

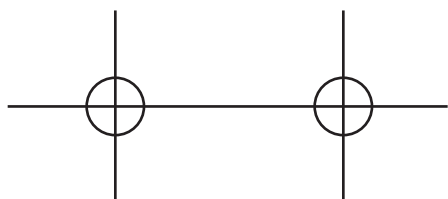
G) Deck lid torsion rods may need to be adjusted to support the wings weight. Adjust the center torsion rod retainer (spring steel on early cars, rubber on later cars) or adjust torsion rods at the hinge brackets for more support.



SATISFACTION GUARANTEE:

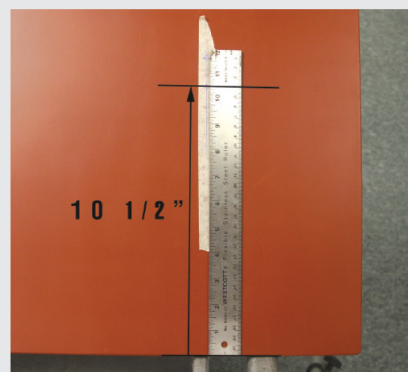
If you are not happy with this product for any reason or found product to be defective in manufacturing, simply return it to Scott Drake within 30 days of purchase and we will replace it - no questions asked. We stand behind our products one hundred percent, so you can sit behind the wheel with pride.

** Please call Scott Drake Customer Service for a Return Authorization (RA) before returning any product. Proof of purchase and dated receipt must be present with any return. All returned products are tested and if found to be damaged by the installer, no replacement will be issued. You pay the cost to ship to us, we pay for the return shipping. Guarantee does not include any labor and/or tax charges incurred.*

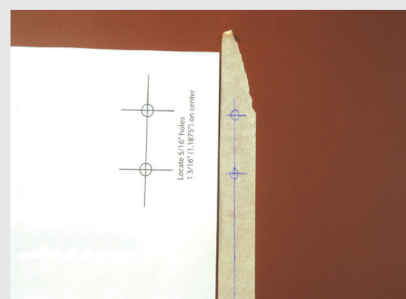


Template

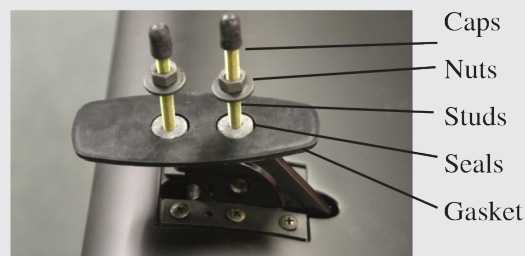
Locate 5/16" holes
1-3/16" (1.1875") on center



Measure from the front deck lid edge rearward 10½"

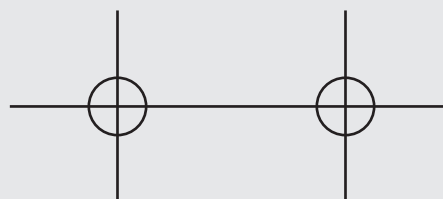


Use template to mark rear hole locations



Caps
Nuts
Studs
Seals
Gasket

Template



Locate 5/16" holes
1-3/16" (1.1875") on center